

**Before assembly**

- We recommend that time is taken to read the instructions before starting assembly, then follow the easy step by step guide. The instruction sheet is only a guide to the assembly. Certain items may not be shown to scale.
- Check all components prior to assembly
- This product should be assembled by no less than 2 people.
- Some of the components may have sharp edges wear protective work gloves while handling components.
- Never attempt to erect the assembly in high winds.
- Drill all components where indicated.

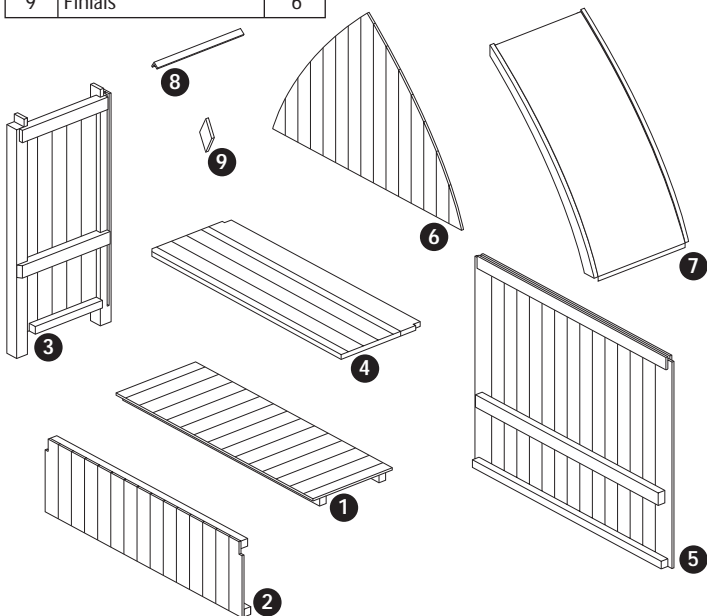


**Recommended tools for assembly**

- Cross head screw driver
- Drill with 4mm diameter drill bit
- Step ladder

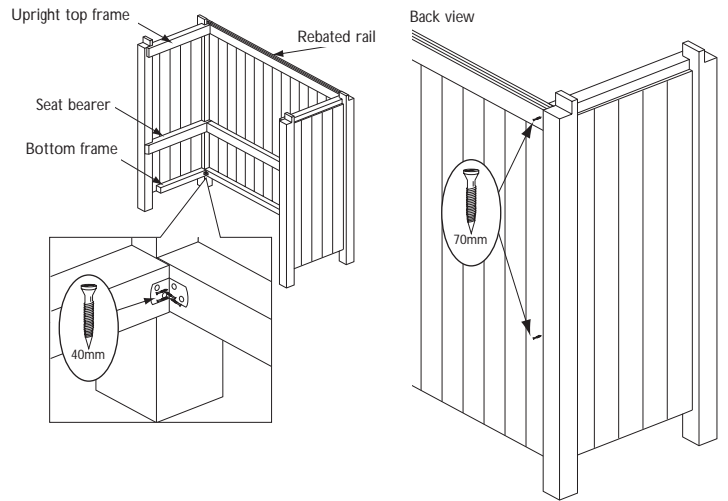
No.	Components	Qty.
1	Floor	1
2	Seat front	1
3	Uprights	2
4	Seat	1
5	Seat back	1
6	Triangular panel	1
7	Roof sections	2
8	Coverstrip	1
9	Finials	6

No.	Fixing Kit	Qty.
10	Screws 70mm	6
11	Screws 50mm	15
12	Screws 40mm	46
13	Screws 30mm	16
14	L-brackets	5



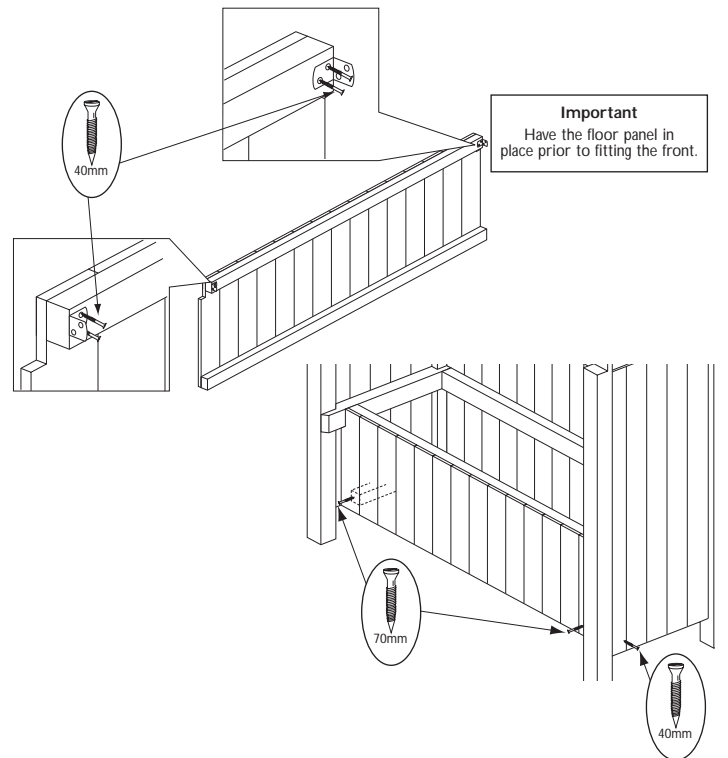
**1. Back to uprights**

Fit the back panel into the slots of the left upright. Make sure the seat bearers are on the inside and that the rebated rail is at the top. Secure together by using 2 x 70mm screws, 1 through the rebated rail into the end of top frame of the upright and 1 through the back panel into the end of the seat bearer, secure the bottom frames of the 2 panels with an L-bracket and 4 x 40mm screws. Repeat for the other upright.



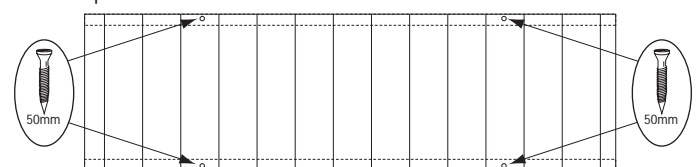
**2. Seat front and floor**

Fit L-brackets to each end of the front panel top frame as shown using 2 x 40mm screws per bracket. Prior to fitting the front panel, have the floor in place. Lift the front panel between the uprights. Ensure the top of the front panel is flush with the top of the seat bearers and secure by screwing 1 x 70mm screw through the front panel into the end of each upright bottom frame. Make sure the front panel is vertical and secure the L-brackets at the top to the seat bearer using 2 x 40mm screws per bracket. To complete attaching the front panel screw 1 x 40mm screw through each upright into the bottom frame of the front panel.



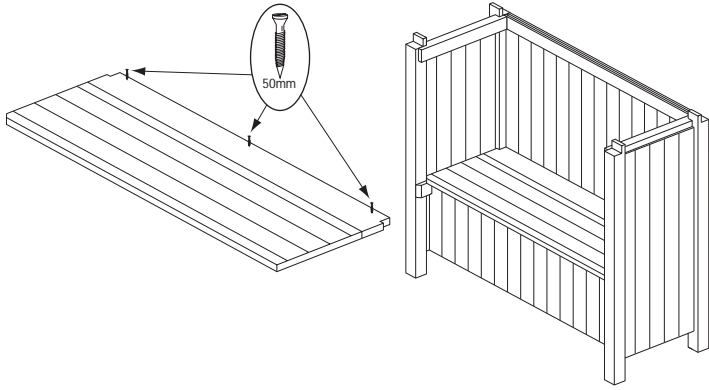
**3. Secure the floor**

Secure the floor down using 4 x 50mm screws to the bottom frame of the front and back panel.




#### 4. Seat

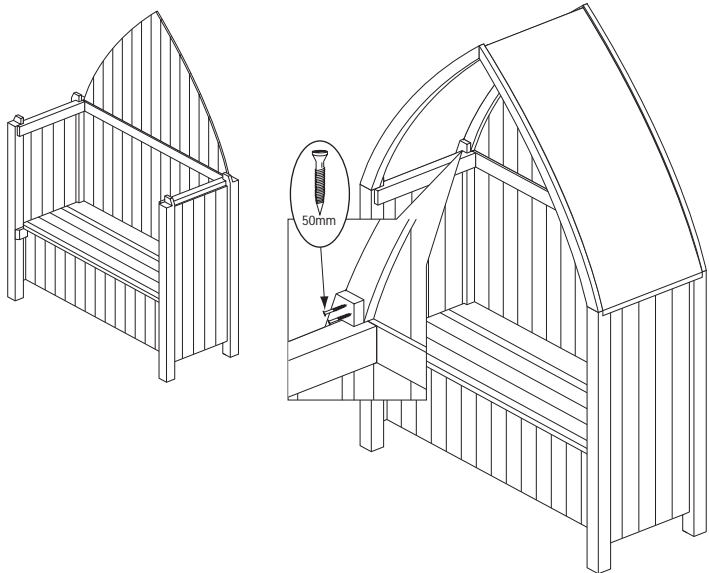
Place seat on the seat bearers with the hinges at the back. Make sure it is square and is able to open freely. Screw to the back panel seat bearer using 3 x 50mm screws.



#### 5. Roof Assembly

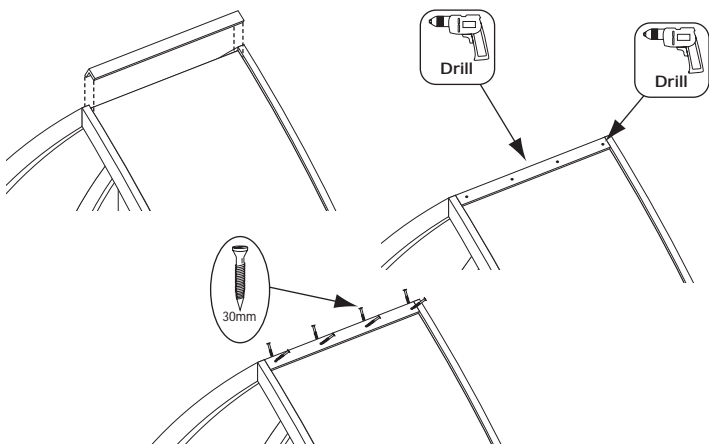
Lift the triangular panel into the rebate of the seat back. Lift on the roof panels with the rebated rafters at the back of the arbour, ensure the triangular panel fits into the rafter rebates. To secure in place screw 2 x 50mm through each tab at the top of the uprights into the roof rafters as shown below.

 wear protective gloves while handling roof sections.



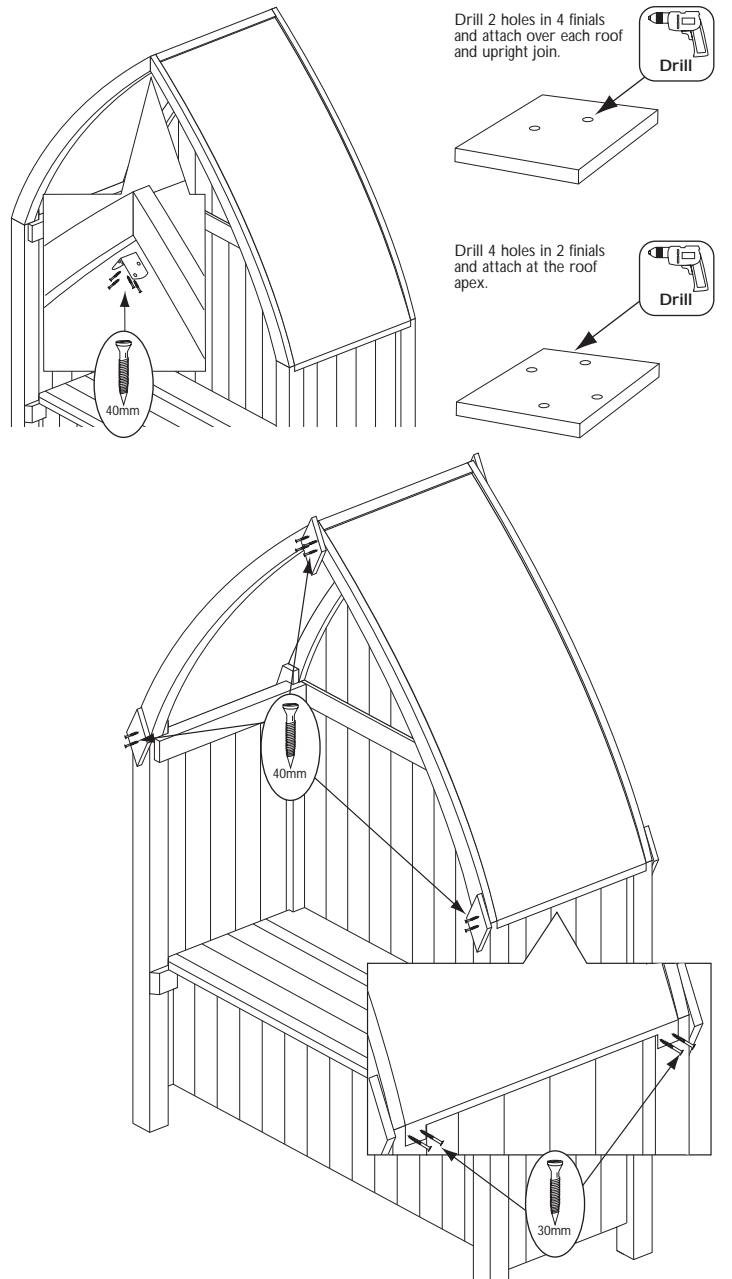
#### 6. Coverstrip

Place the coverstrip on the roof apex, Drill 4 holes in each side and secure using 8 x 30mm screws.



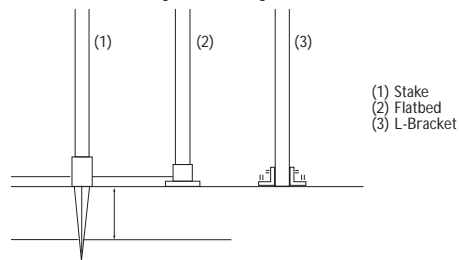
#### 7. finials

Hold the apex of the roof together by securing an L-bracket using 4 x 40mm screws to the underside of the front 2 rafters. Drill 2 holes in 4 finials as shown below. Attach finials over each roof and upright join, 2 on the front and 2 on the back. Drill 2 holes in the remaining finials, 1 on the front and 1 on the back of the roof apex. Use 4 x 40mm screws per finial. Attach the metal roof to the upright legs using 2 x 30mm screws per leg as shown in the diagram.



#### 8. Securing the posts

Place the arbour in the desired location. For a more permanent base fixture use a metal base fixing to secure the bottom of the upright posts into the ground (1 & 2). If securing to decking or concrete base use metal L-brackets (3).



If in doubt of any aspect regarding the assembly, use or safety of your arbour please contact us :

**Help Line (Normal Office Hours) 01829 261121**

ROWLINSON GARDEN PRODUCTS LIMITED  
Unit 2 Green Lane  
Wardle Nr.Nantwich  
Cheshire  
CW5 6BN  
Tel : 01829 262080  
Fax : 01829 262089

We constantly improve the quality of our products, occasionally the components may differ from the components shown and are only correct at time of printing. We reserve the right to change the specification of our products without prior notice.

2006 © Rowlinson Garden Products Ltd