



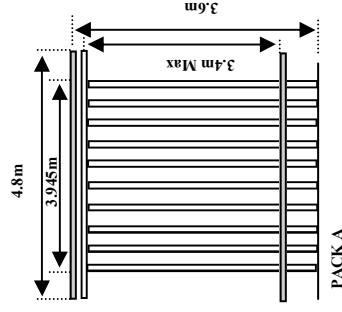
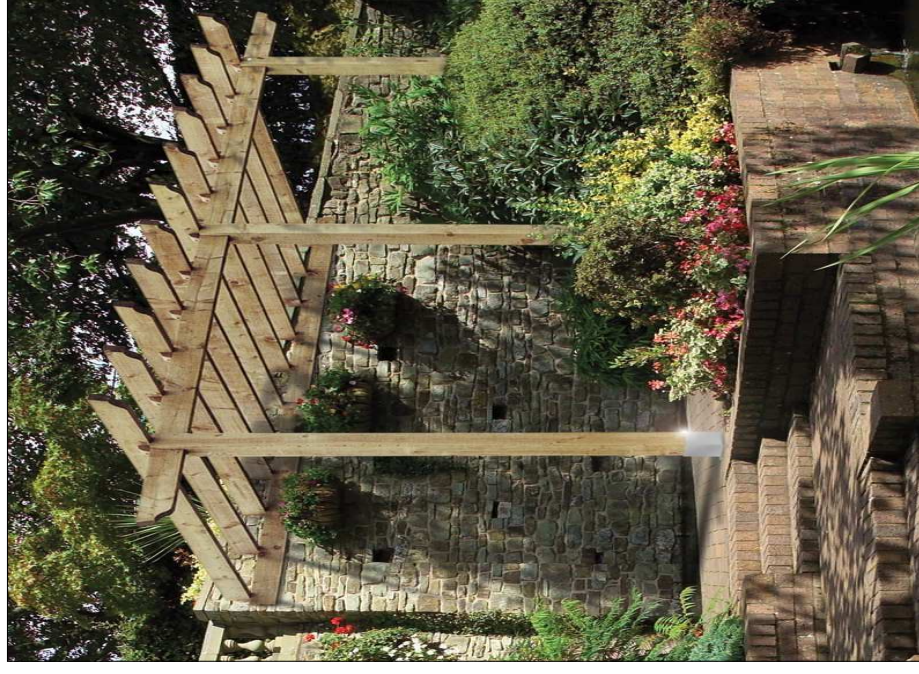
Care of your Pergola

All Grange Pergola projects are made from planed pressure treated and FSC certified timber and as such is guaranteed against rot for a minimum of 15 years. However, it must be remembered that as a natural product, timber is subject to movement and weathering as it seasons. It is not uncommon for small splits to occur when drying and warping when timber is allowed to dry too rapidly. These will normally go back when humidity rises. It is nature at work and not considered a fault.

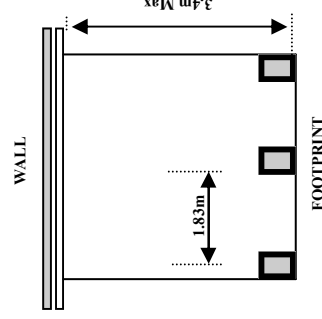
It is recommended that the structure is treated with a water based preservative on an annual basis to ensure longevity.

The manufacturer reserves the right to alter the specifications as required.

GRANGE PERGOLA PROJECTS LEAN TO/CAR PORT PERGOLA



WITH 2.7M POSTS FOR BEDDING DIRECTLY INTO THE GROUND



Halesfield 21, Telford, Shropshire, TF7 4PA
Phone: +44 (0)1952 588088 Fax: +44 (0) 1952 581522
Email: sales@grangefen.co.uk
web: www.grangefen.co.uk



Mixed Sources
Product group from well-managed
Forests and other controlled sources.
www.fsc.org Cert no. SGS-COC-000100
© 1996 Forest Stewardship Council

LEAN TO/CAR PORT ASSEMBLY INSTRUCTIONS

LEAN TO/CAR PORT ASSEMBLY INSTRUCTIONS

PARTS SUPPLIED

| Ref | Description | Qty |
|-----|-------------|-----|
| A | Posts | 3 |
| B | Rafters | 4 |
| C | Rafters | 11 |
| D | U clips | 22 |

| 1 X HARDWARE PACK & ACCESSORIES | | |
|---------------------------------|------------------|----|
| X | SCREWS 5 X 100mm | 6 |
| Y | SCREWS 5 X 70mm | 6 |
| Z | SCREWS 4 X 40mm | 88 |

TOOLS REQUIRED CROSS HEAD SCREWDRIVER (not supplied)



BEFORE YOU START

Check the pack/s and make sure that you have all of the parts listed above. If not contact your retailer who will be able to help you.
Make sure you have the right tools to hand, plenty of space and a clean, dry area for assembly.
It is advisable for two people to carry out the work.

ASSEMBLY INSTRUCTIONS

- Fix two Rafters (B) to the wall using three screws (x) in each rafter.
Ensure they are level.
- Position the centre post so that its centre is in line with the centre of the fixed wall rafters.
- Next, position one of the posts and assemble one of the remaining Rafters (B) using screws (y) - see Fig.2. The distance between the two posts should be 1.83m.
- Fix one of the Rafters (C) between the wall rafter and the end post (as Fig.3) using U clips (D).
- Position the other end post and Rafter (B) and fix at the centre post.
- Fix a second Rafter (C) between the wall rafter and post as step 5 using Rafter Blocks.
- Fix a Rafter (C) from the centre post to the joint of the wall rafters.
- The remaining Rafters (C) should be spaced equally between the rafters fitted already (Fig.4)
- Ensure the structure is level and upright and fix the posts in place.

SITE PREPARATION

Mark out the area where the structure is to be sited using the 'footprint' show overleaf. Excavate a 300mm hole for each post to a depth of at least 300mm (see Fig. A). This will give you your structure adequate stability.

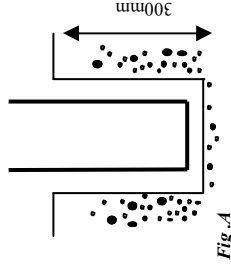


Fig. A

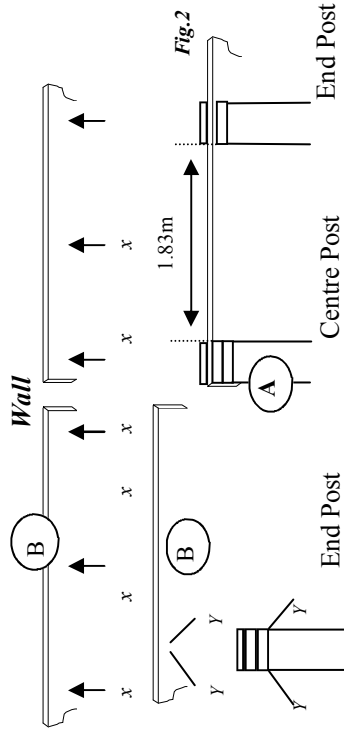


Fig.2

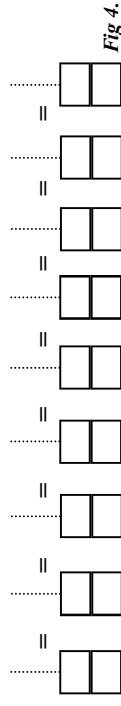


Fig.4

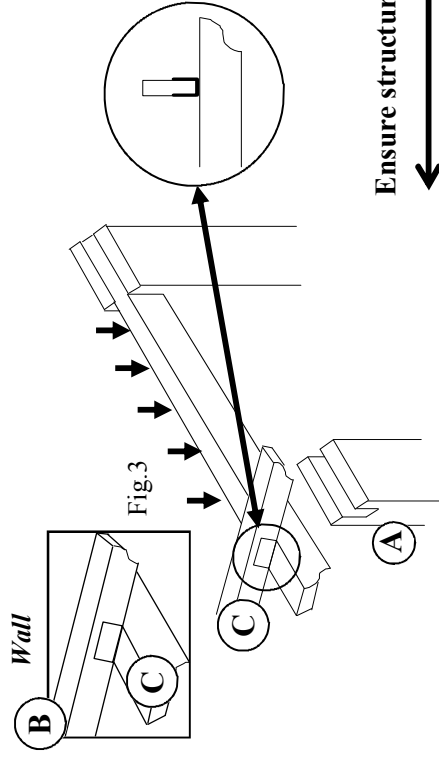


Fig.3

Ensure structure is level

